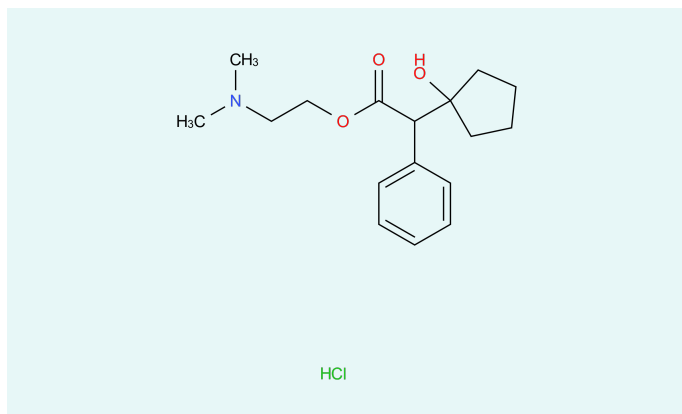


Cyclopentolate hydrochloride



CAS

5870-29-1

Status

Commercial

[Inquiry](#)

Cyclopentolate hydrochloride belongs to the group of atropine derivatives. The active ingredient dilates the pupils. It is used for the treatment of enlargement of the pupil and the paralysis of accommodation (Adjustment of the refractive power of the eye to sharply perceive objects at different distances).

Description

Formula	$C_{17}H_{25}NO_3 \cdot HCl$
Molecular weight	327.85 g/mol
Molecular size	small
Controlled Substance	no
Precursor	no
Indications	Ophthalmological drugs

Your Contact



Marius Hang

International Division

Director API Export

Midas Pharma GmbH

Rheinstr. 49

55218 Ingelheim

Germany

[Send E-Mail](#)

Disclaimer

The information contained herein is the proprietary information of Midas Pharma GmbH and its affiliates. This information is provided to you solely for your evaluation, to determine your interest in a potential business relationship with Midas Pharma GmbH and/or its affiliates. Midas Pharma GmbH excludes any express or implied representations, guarantees or warranties of whatsoever nature, including but not limited to the warranties for the completeness or accuracy of the information provided herein.

No information provided herein – including any reference to any product or service – constitutes an offer for sale, or shall be construed as representing an offer for sale. In particular, nothing herein should be construed as a promotion or advertisement for any product, or for the use of any product, that infringes valid patents and/or is not authorized by the laws and regulations of your country of residence.