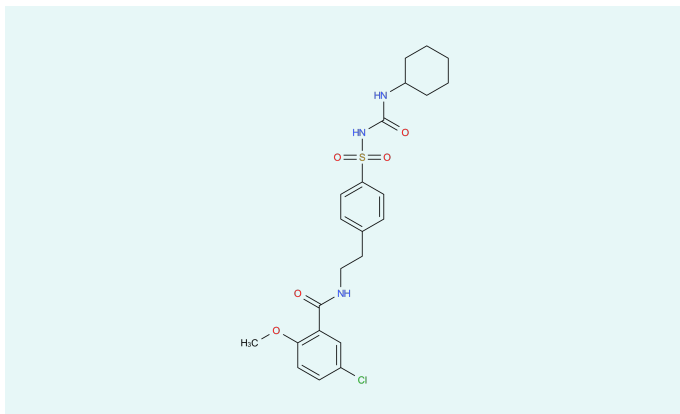


Glibenclamid



CAS

10238-21-8

Status

Commercial

[Inquiry](#)

Glibenclamide is a sulphonylurea used as an antidiabetic agent. The substance blocks the potassium channels in the pancreatic β -cells. This results in an opening of the calcium channels, which in turn release insulin by enzyme induction. Therefore, Glibenclamide only works if there is an ability to insulin secretion. Metformin is considered as a medicinal substance with less side effect.

Description

Formula	C ₂₃ H ₂₈ ClN ₃ O ₅ S
Molecular weight	494.00 g/mol
Molecular size	small
Controlled Substance	no
Precursor	no
Indications	Drugs used in diabetes

Your Contact



Marius Hang

International Division

Director API Export

Midas Pharma GmbH

Rheinstr. 49

55218 Ingelheim

Germany

[Send E-Mail](#)

Disclaimer

The information contained herein is the proprietary information of Midas Pharma GmbH and its affiliates. This information is provided to you solely for your evaluation, to determine your interest in a potential business relationship with Midas Pharma GmbH and/or its affiliates. Midas Pharma GmbH excludes any express or implied representations, guarantees or warranties of whatsoever nature, including but not limited to the warranties for the completeness or accuracy of the information provided herein.

No information provided herein – including any reference to any product or service – constitutes an offer for sale, or shall be construed as representing an offer for sale. In particular, nothing herein should be construed as a promotion or advertisement for any product, or for the use of any product, that infringes valid patents and/or is not authorized by the laws and regulations of your country of residence.