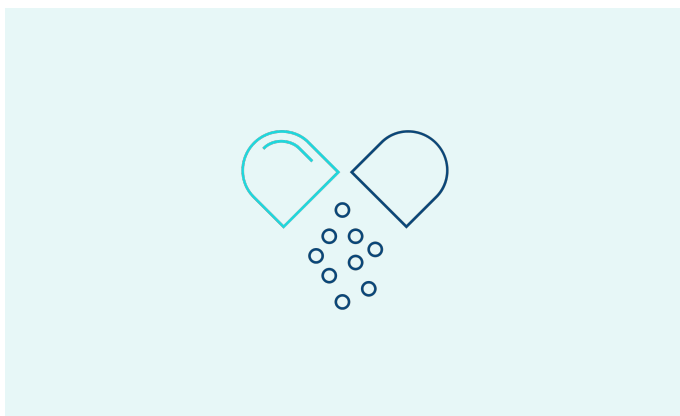


Granulocyte colony-stimulating factor



CAS

143011-72-7/208265-92-3

Status

Development

Inquiry

G-CSF belongs to the peptide hormone group. The active substance stimulates the formation of special leukocytes (granulocytes). It is used for the treatment of various leukopenia.

Description

Formula	$C_{845}H_{1343}N_{223}O_{243}S_9$
----------------	------------------------------------

Molecular weight	18,802.80 g/mol
-------------------------	-----------------

Molecular size	large
-----------------------	-------

Controlled Substance	no
-----------------------------	----

Precursor	no
------------------	----

Indications	Immunostimulants drugs
--------------------	------------------------

Your Contact



Marius Hang

International Division

Director API Export

Midas Pharma GmbH

Rheinstr. 49

55218 Ingelheim

Germany

[Send E-Mail](#)

Disclaimer

The information contained herein is the proprietary information of Midas Pharma GmbH and its affiliates. This information is provided to you solely for your evaluation, to determine your interest in a potential business relationship with Midas Pharma GmbH and/or its affiliates. Midas Pharma GmbH excludes any express or implied representations, guarantees or warranties of whatsoever nature, including but not limited to the warranties for the completeness or accuracy of the information provided herein.

No information provided herein – including any reference to any product or service – constitutes an offer for sale, or shall be construed as representing an offer for sale. In particular, nothing herein should be construed as a promotion or advertisement for any product, or for the use of any product, that infringes valid patents and/or is not authorized by the laws and regulations of your country of residence.