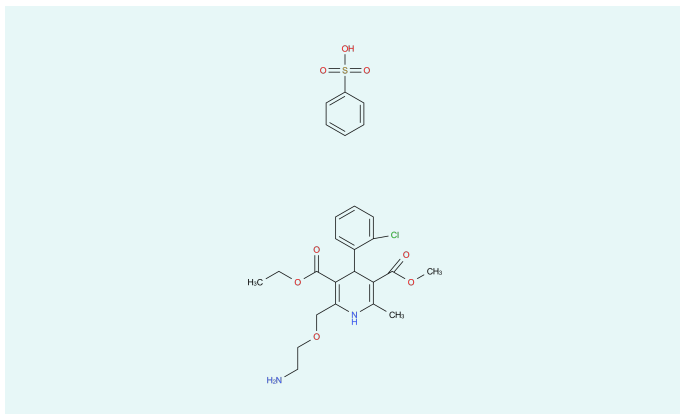


Amlodipine besylate



CAS

111470-99-6

Status

Commercial

[Inquiry](#)

Amlodipine besylate belongs to the group of nifedipine derivatives. The active ingredient lowers blood pressure and vascular resistance. It is used for the treatment of arterial hypertension and chronic stable angina pectoris.

Description

Formula $C_{20}H_{25}ClN_2O_5 \cdot C_6H_6O_3S$

Molecular weight 567.05 g/mol

Molecular size small

Controlled Substance no

Precursor no

Indications Calcium channel blockers

Your Contact



Marius Hang

International Division

Director API Export

Midas Pharma GmbH

Rheinstr. 49

55218 Ingelheim

Germany

[Send E-Mail](#)

Disclaimer

The information contained herein is the proprietary information of Midas Pharma GmbH and its affiliates. This information is provided to you solely for your evaluation, to determine your interest in a potential business relationship with Midas Pharma GmbH and/or its affiliates. Midas Pharma GmbH excludes any express or implied representations, guarantees or warranties of whatsoever nature, including but not limited to the warranties for the completeness or accuracy of the information provided herein.

No information provided herein – including any reference to any product or service – constitutes an offer for sale, or shall be construed as representing an offer for sale. In particular, nothing herein should be construed as a promotion or advertisement for any product, or for the use of any product, that infringes valid patents and/or is not authorized by the laws and regulations of your country of residence.