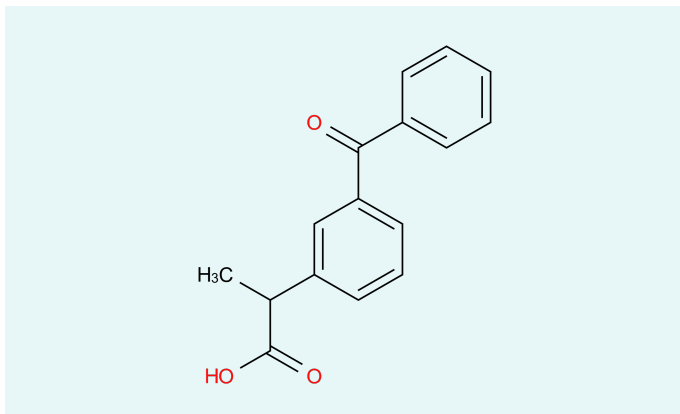


Ketoprofen



CAS

22071-15-4

Status

Commercial

[Inquiry](#)

Ketoprofen is an acidic, non-opioid analgesic used for pain and inflammation. By inhibiting prostaglandin synthesis at the key enzyme cyclooxygenase, it can be used for acute and chronic pain (e.g. arthrosis and arthritides). Like most active ingredients in its class, it is poorly tolerated by the gastrointestinal tract, a particular side effect is light sensitization.

Description

Formula	C ₁₆ H ₁₄ O ₃
----------------	------------------------------------------------

Molecular weight	254.28 g/mol
-------------------------	--------------

Molecular size	small
-----------------------	-------

Controlled Substance	no
-----------------------------	----

Precursor	no
------------------	----

Indications	Anti-inflammatory and antirheumatic products, Topical products for joint and muscular pain
--------------------	--------------------------------------------------------------------------------------------

Your Contact



Marius Hang

International Division

Director API Export

Midas Pharma GmbH

Rheinstr. 49

55218 Ingelheim

Germany

[Send E-Mail](#)

Disclaimer

The information contained herein is the proprietary information of Midas Pharma GmbH and its affiliates. This information is provided to you solely for your evaluation, to determine your interest in a potential business relationship with Midas Pharma GmbH and/or its affiliates. Midas Pharma GmbH excludes any express or implied representations, guarantees or warranties of whatsoever nature, including but not limited to the warranties for the completeness or accuracy of the information provided herein.

No information provided herein – including any reference to any product or service – constitutes an offer for sale, or shall be construed as representing an offer for sale. In particular, nothing herein should be construed as a promotion or advertisement for any product, or for the use of any product, that infringes valid patents and/or is not authorized by the laws and regulations of your country of residence.