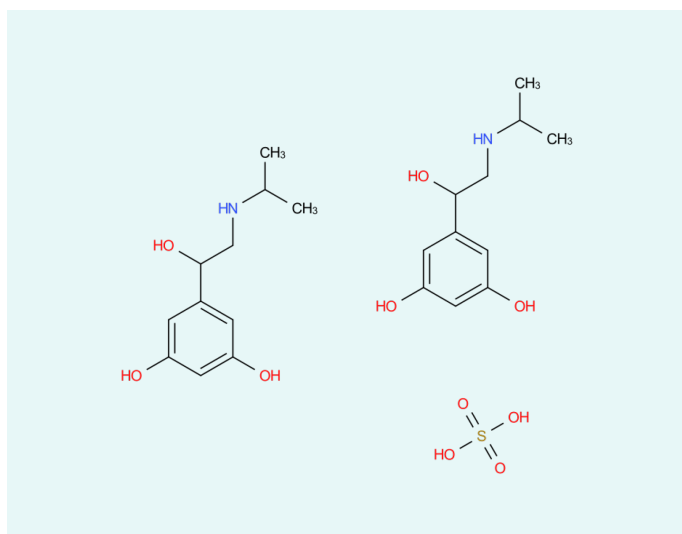


Metaproterenol sulfate



CAS

5874-97-5

Metaproterenol sulfate is a resorcinol derivative that acts at B1- and B2-adrenoceptors. This results in the effect as β -sympathomimetic. It is chiral and is used as a racemate. The drug is similar to adrenaline and accelerates the heartbeat (but weakens the blood pressure), which is why it is used in veterinary medicine for bradycardia. In humans, it is only approved for acute asthma attacks.

Description

Formula $2 C_{11}H_{17}NO_3 \cdot H_2SO_4$

Molecular weight 520.59 g/mol

Molecular size small

Controlled Substance no

Precursor no

Indications Drugs for obstructive airway diseases

Your Contact



Marius Hang

International Division

Director API Export

Midas Pharma GmbH

Rheinstr. 49

55218 Ingelheim

Germany

Disclaimer

The information contained herein is the proprietary information of Midas Pharma GmbH and its affiliates. This information is provided to you solely for your evaluation, to determine your interest in a potential business relationship with Midas Pharma GmbH and/or its affiliates. Midas Pharma GmbH excludes any express or implied representations, guarantees or warranties of whatsoever nature, including but not limited to the warranties for the completeness or accuracy of the information provided herein.

No information provided herein – including any reference to any product or service – constitutes an offer for sale, or shall be construed as representing an offer for sale. In particular, nothing herein should be construed as a promotion or advertisement for any product, or for the use of any product, that infringes valid patents and/or is not authorized by the laws and regulations of your country of residence.