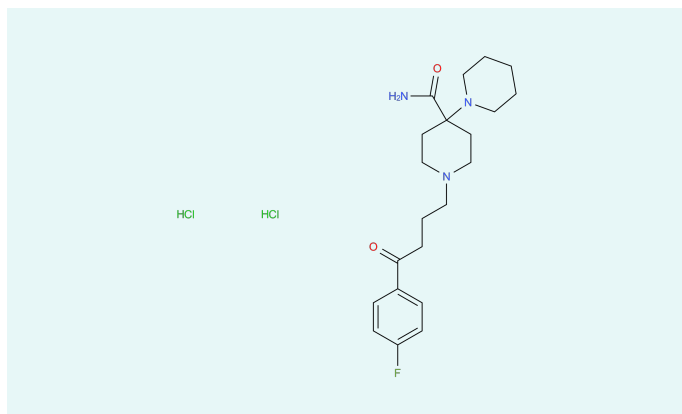


Pipamperone dihydrochloride



CAS

2448-68-2

Status

Commercial

[Inquiry](#)

Pipamperone dihydrochloride belongs to butyrophenones, the active ingredient is used as an antipsychotic and sedative. It works mainly on the serotonin and dopamine receptors. The sedative effect outweighs that of the antipsychotic. Pipamperon regulates internal restlessness, sleep disturbances, and also weakens arousal conditions, as well as aggressiveness.

Description

Formula $C_{21}H_{30}FN_3O_2 \cdot HCl$

Molecular weight 448.40 g/mol

Molecular size small

Controlled Substance no

Precursor no

Indications Psycholeptics

Your Contact



Marius Hang

International Division

Director API Export

Midas Pharma GmbH

Rheinstr. 49

55218 Ingelheim

Germany

[Send E-Mail](#)

Disclaimer

The information contained herein is the proprietary information of Midas Pharma GmbH and its affiliates. This information is provided to you solely for your evaluation, to determine your interest in a potential business relationship with Midas Pharma GmbH and/or its affiliates. Midas Pharma GmbH excludes any express or implied representations, guarantees or warranties of whatsoever nature, including but not limited to the warranties for the completeness or accuracy of the information provided herein.

No information provided herein – including any reference to any product or service – constitutes an offer for sale, or shall be construed as representing an offer for sale. In particular, nothing herein should be construed as a promotion or advertisement for any product, or for the use of any product, that infringes valid patents and/or is not authorized by the laws and regulations of your country of residence.