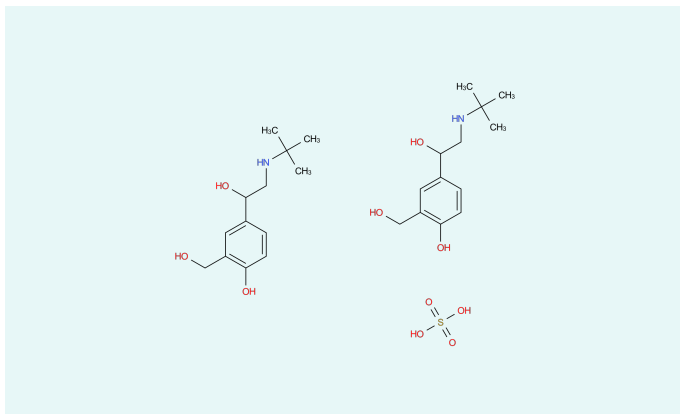


# Salbutamol sulfate



## CAS

51022-70-9

## Status

Commercial

[Inquiry](#)

Salbutamol sulfate is a chiral  $\beta_2$ -sympathomimetic that acts on the  $\beta_2$ -adrenergic receptors. The main effect is the relaxation of smooth muscle. An inhaler with Salbutamol can ease an asthmatic attack. The onset of action after a few seconds can be mitigated by other forms of administration (prolonged-release tablets) and delayed. In addition, salbutamol can be used as an anabolic and against tachycardia and tachyarrhythmia.

## Description

**Formula**  $2 C_{13}H_{21}NO_3 \cdot H_2SO_4$

**Molecular weight** 576.70 g/mol

**Molecular size** small

**Controlled Substance** no

**Precursor** no

**Indications** Drugs for obstructive airway diseases

## Your Contact



**Marius Hang**  
*International Division*  
*Director API Export*

Midas Pharma GmbH  
Rheinstr. 49  
55218 Ingelheim  
Germany  
[Send E-Mail](#)

### Disclaimer

*The information contained herein is the proprietary information of Midas Pharma GmbH and its affiliates. This information is provided to you solely for your evaluation, to determine your interest in a potential business relationship with Midas Pharma GmbH and/or its affiliates. Midas Pharma GmbH excludes any express or implied representations, guarantees or warranties of whatsoever nature, including but not limited to the warranties for the completeness or accuracy of the information provided herein.*

*No information provided herein – including any reference to any product or service – constitutes an offer for sale, or shall be construed as representing an offer for sale. In particular, nothing herein should be construed as a promotion or advertisement for any product, or for the use of any product, that infringes valid patents and/or is not authorized by the laws and regulations of your country of residence.*